

Instruction Manual



FY-2200W

Our equipment is approved by the following car manufacturers



Contents

1. Precautions	1
2. Specifications	2
3. Installation	3
4. Controls	4
5. Operation	5
6. Troubleshooting	
1) Troubleshooting	6
2) Lamp Tube Replacement	7
7. Exploded View	8
8. Circuit Diagram	9

1. Precaution

1. Read this manual carefully before installing or servicing this equipment.
2. This equipment is designed for paint drying applications. Adjust to the correct temperature and check minimum safe distance from heat source when using. Improper use can cause paint surface damage.
3. Installation and servicing must be performed by a qualified technician or service agency.
4. The system has been designed for easy installation, low operating cost and minimum maintenance. The warranty does not cover lamp tube defects resulting from misuse or improper operation.
5. Disconnect power source when the equipment is not in use for a long period.
6. The lamp tube should not be perpendicular to the ground when the equipment is in operation. Otherwise, it will shorten the service life of the lamp tube.

2. Specifications

Model	FY-2200W
Input Power Source	Single Phase 220V 50/60Hz
Input Power (W)	2 × 1000
Curing Area (mm)	800 × 1000
Temperature (°C)	35 - 80
Time Setting	0 - 99mins Adjustable
Light Intensity (%)	10 - 100

3. Installation

The shortwave infrared curing lamp is divided into 3 parts (a base, a column and a cassette).

1) Installation of the base.

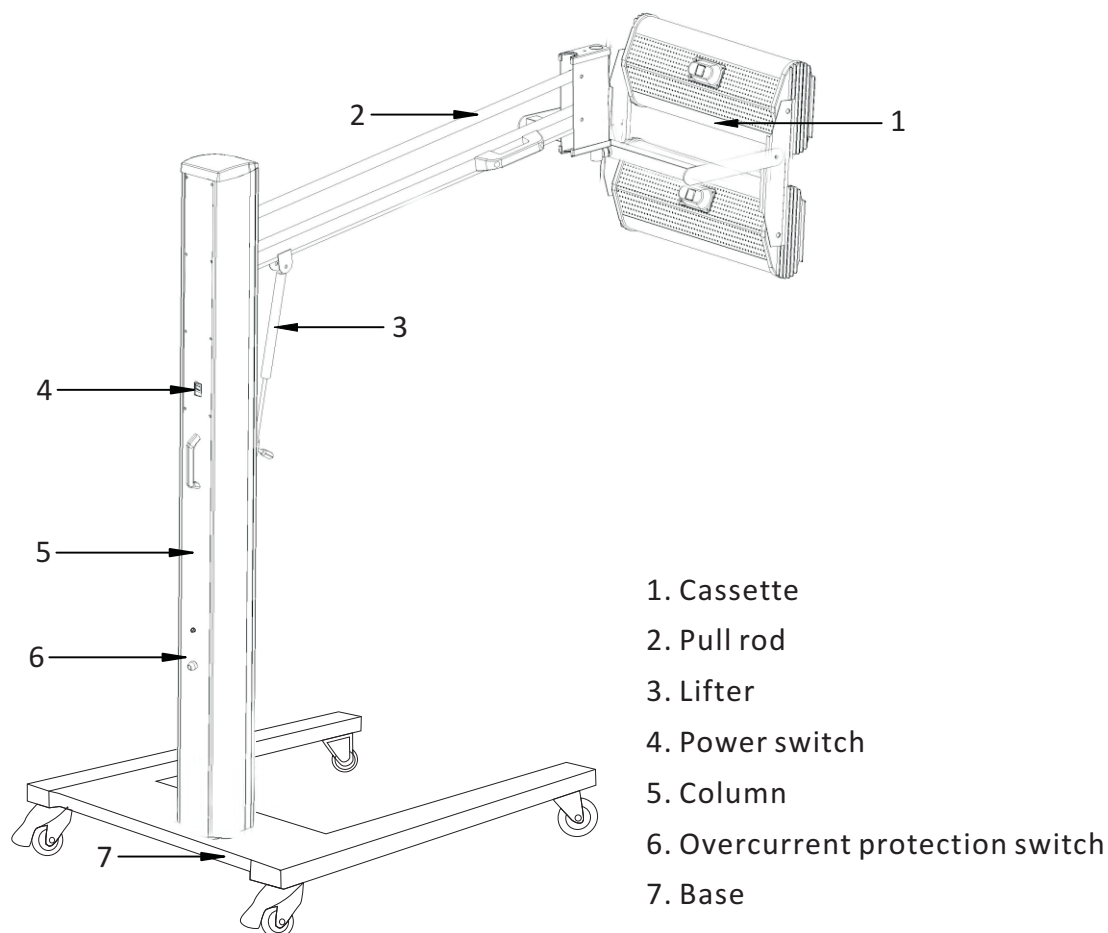
- a. Open the packing of the base.
- b. Install the four wheels on the base respectively and tighten up the screws. Usually, the wheels with brakes should be mounted on the rear of the base.

2) Installation of the column.

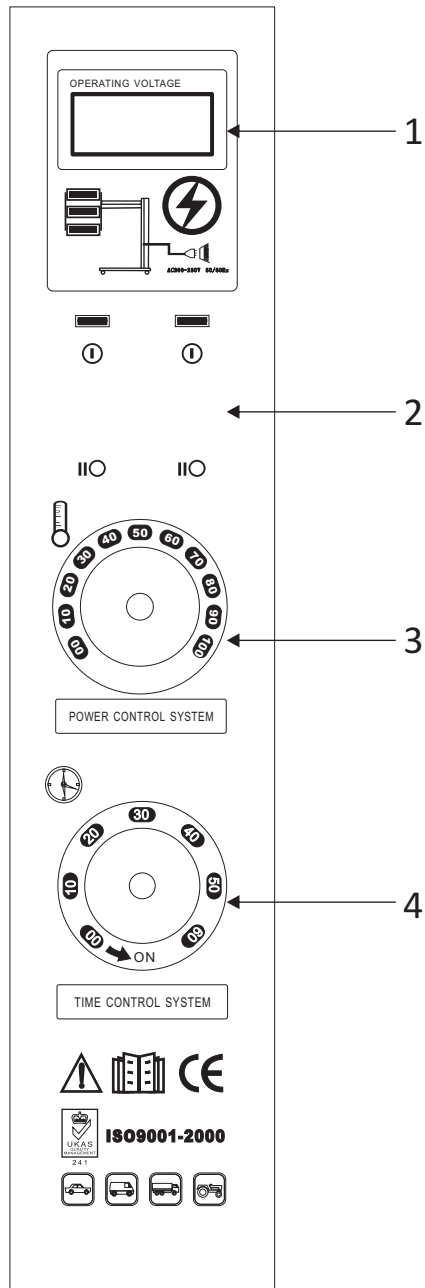
- a. Open the packing of the column.
- b. Put the column vertically on the top of the base, directly engage the screw holes and tighten up using the screws.
- c. Connect the support arm with the column for supporting the cassette.
- d. Connect the lifter with the column to control the up and down movement of the cassette.

3) Installation of the cassette.

- a. Open the packing of the cassette with care.
- b. Connect cassette with support arm and tighten up with the screws.
- c. Connect control wires and adjust the angle of cassette.



4. Controls



1. Operating Voltage

2. Lamp Selector

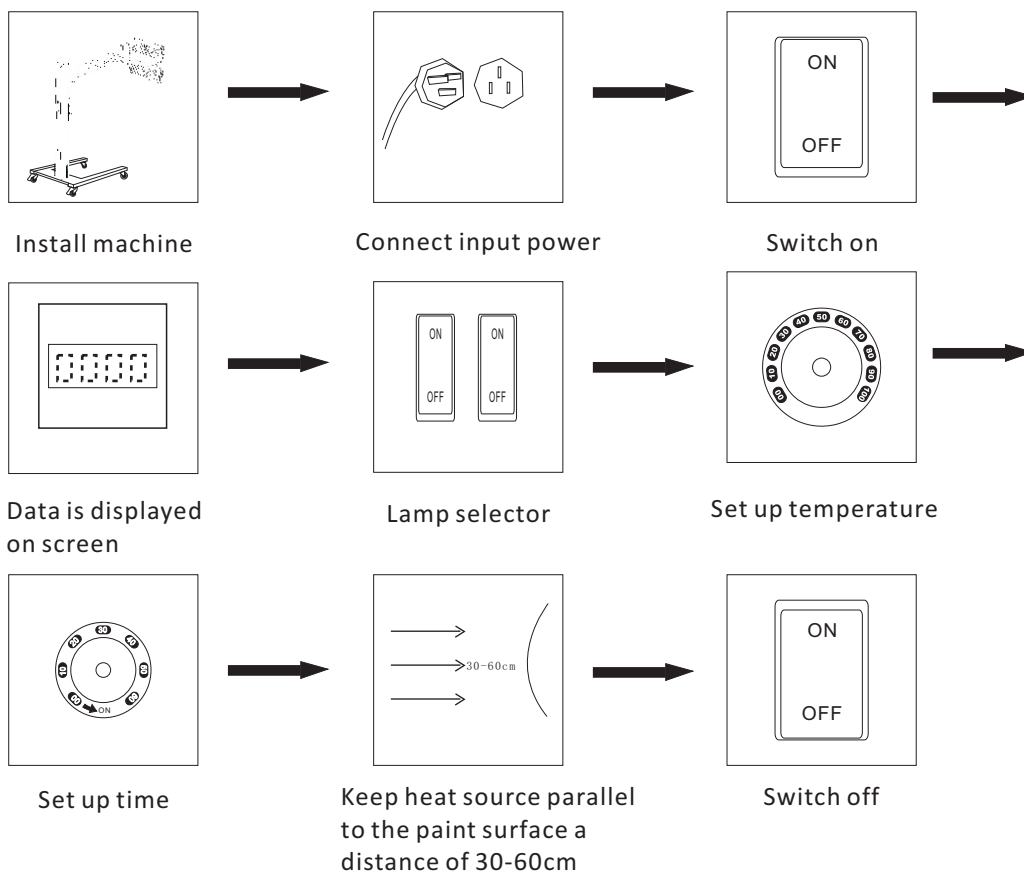
3. Power Adjustment

4. Time Adjustment

Circuit breaker must be installed

5. Operation

1. Connection of electrical supply. Make sure that the supply cable is at least 4mm² at 220V.
Note: Make sure that the facility supply voltage and frequency are the same as shown on the equipment name plate.
2. Connect to power supply of AC 220V. Switch on the equipment. The LED display will show the normal voltage as 220V.
3. Set time and power according to the requirements of the paint to achieve the best curing result. (Usually, the values are set at 15mins in time and 70% in power.)
4. Adjust the distance from heat source to paint surface. (Usually, keeping a distance of 45cm from the paint surface is best.)
5. Protect the lamp against shocks and vibrations especially when it is cold.
6. During the curing process, the paint surface must be clean, without water and impurities.
7. Preferably do not touch quartz with bare hands. If grease or chemical compounds are deposited on the quartz, simply clean with a cloth moistened with alcohol.



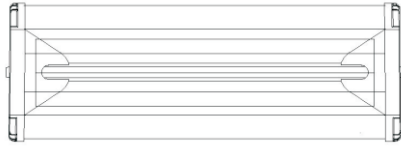
6. Troubleshooting

1. Troubleshooting

PROBLEM	CAUSE	SOLUTION
Lamp tube does not work	1) Lamp tube damaged 2) Lamp tube not plugged in 3) Control silicon damaged	1) Check lamp tube 2) Check connections 3) Check control silicon
Lamp tube does not turn off	1) Control silicon damaged	1) Check control silicon
Digital display is blank or is incomplete	1) Unplugged flat wire in circuit board 2) Digital display is damaged	1) Check flat wire 2) Check digital display
Time and temperature cannot be adjusted	1) Potentiometer damaged 2) Timer is damaged	1) Check whether the potentiometer is in proper working condition 2) Check whether the timer is in proper working condition

6. Troubleshooting

2. Lamp Tube Replacement



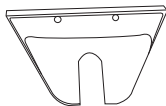
(1)

1. Prepare cassette for replacement



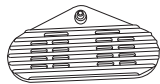
(2)

2. Remove the grille of cassette



(3)

3. Remove the plates from both ends of the cassette



(4)

4. Remove the fixed plates from both ends of the cassette



(5)

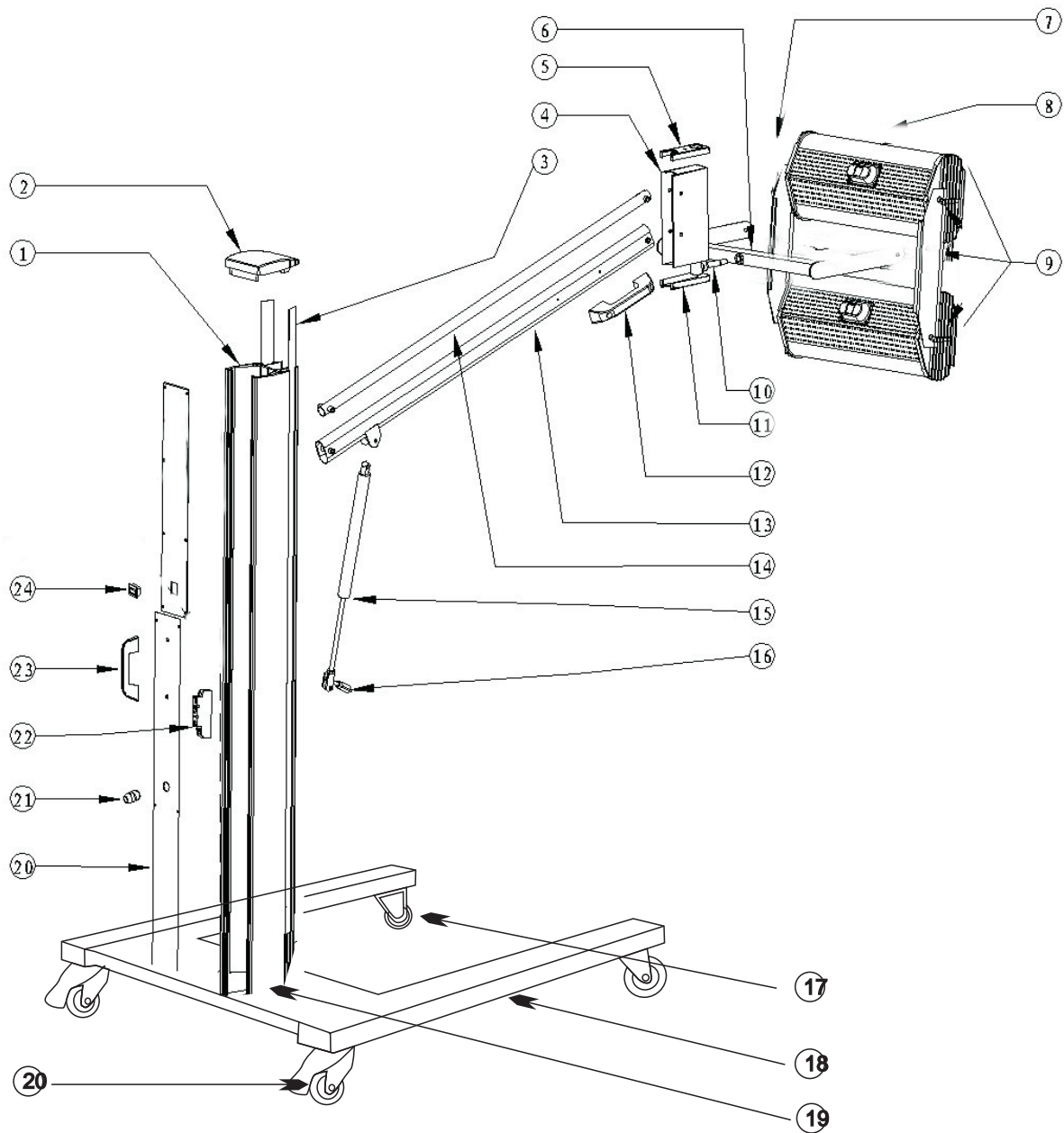
5. Loosen fixed screws and cut off connections, the lamp can be replaced



(6)

6. Reverse the steps above to install the new lamp

7. Exploded View



No.	Name	No.	Name	No.	Name
①	Upright post	⑨	Plastic nut	⑰	Front wheel
②	Top cover	⑩	Connecting axle	⑱	Base
③	Plastic band	⑪	Bottom cover of connector	⑲	Back wheel
④	Connector	⑫	Handle	⑳	Cover plate (lower)
⑤	Top cover of connector	⑬	Lower connecting rod	㉑	Flange
⑥	Bracket	⑭	Upper connecting rod	㉒	Control silicon
⑦	Clamping bar	⑮	Lifter	㉓	Handle
⑧	Cassette	⑯	Lifter handle	㉔	Power switch

8. Circuit Diagram

