

Radiator Cooling System Cleaner

WCS-9800

Operation Manual Book

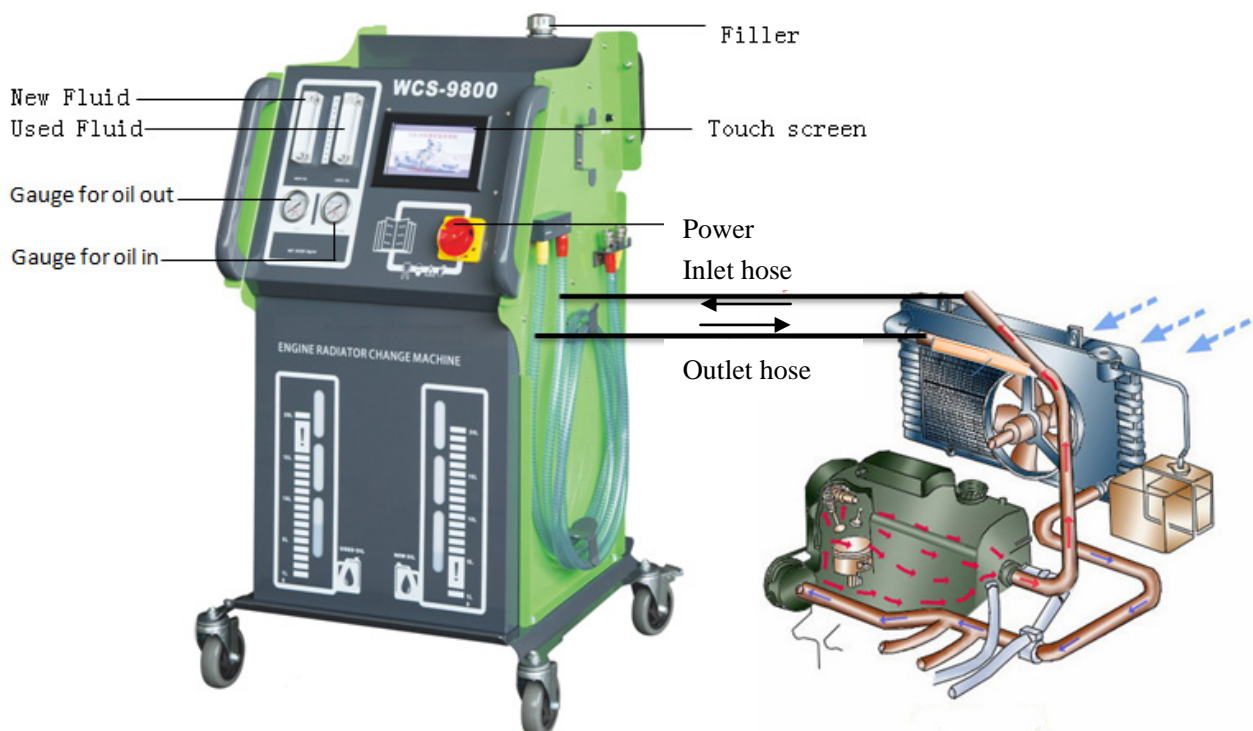
1. Attentions

- 1.1. Read the Manual Book carefully and fully understands it before use.
- 1.2. Operator should wear goggles and gloves to prevent the liquid spatter on the eyes and skin.
- 1.3. Before cleaning operation, check and confirm no leakage in water tank, water line and body.
- 1.4. Open water tank only under liquid cooling of water tank to protect from boiling.
- 1.5. Protecting from over pressure to damage water tank of vehicle, Air and water pressure must be less than 0.2Mpa.

2. Features

- ♦ 7-inch LCD touch screen display. color observation window design.
- ♦ Function with Cycle cleaning; Filling; Recovery of used fluid; Extraction coolant;
- ♦ Shortage fluid alert
- ♦ Intelligent electronic control the full automatic equivalent change of new/used fluid.
- ♦ Power supply: 220V-250w
- ♦ Pressure gauge: 0~2kg/cm²
- ♦ Fluid outlet hose: 2.5 m
- ♦ Fluid return hose: 2.5 m
- ♦ New/used fluid tank: 20L×2

3. Structure



Detailed operation Main menu panel function

Charge: Charge new coolant fluid into engine.

Recovery: Draw back used coolant fluid from engine.

Cleaning: Circulate clean engine radiator cooling Systems.

Equivalent exchange: Synchronous charge new liquid and recycle used fluid.

Empty coolant fluid tank: Empty new/used fluid tank.

System setting: Machine parameter setting.

4. Operating process

preparation

Add enough new coolant to the new water tank of the machine.

Connect the machine to DC12V battery of the vehicle.

Pipe connection



Remove the radiator upper pipe

Choose the proper rubber hose from the toolbox



Tighten the hose

Tighten the joint into the hose

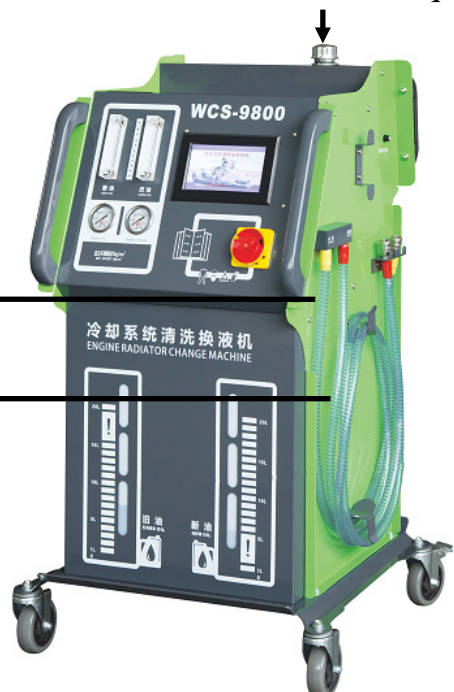
Connect water tank end with outlet hose of machine; Link inlet liquid hose to upper pipe of engine.



Outlet (B)

Inlet (A)

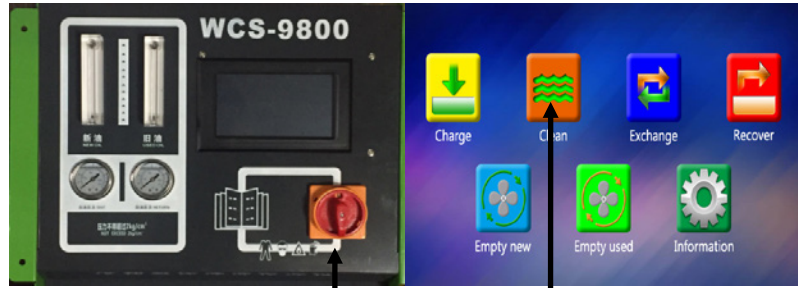
Add coolant liquid



Circulation cleaning

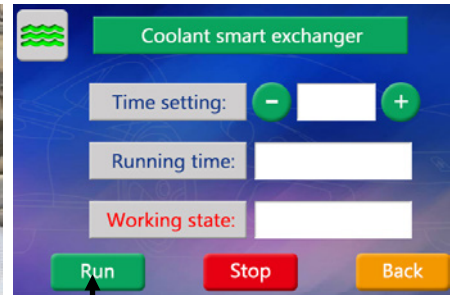


Confirm the engine off and in cooling state. Fill the cleaning agent into the water tank of engine and tighten the cover.



Turn on the power

Enter the operation interface



Start the engine. When liquid appears in the inlet hose A start the machine. (Adjusted water pressure must be less than 0.1Mpa). Select circulation on the LCD screen. Circulation realized between the engine and the machine.

The coolant amount to fill into the machine and running time is as following direction

Vehicle's cylinder No.	Added fluid (Lit.)
3cylinders	4
4 or 6cylinders	6
8 cylinders	8

Vehicle's cylinder No.	Time(min.)
3 cylinders	10
4 or 6cylinders	15-20
8 cylinders	25-30

Coolant fluid exchanged



Start the engine. When liquid appears in the inlet hose start the machine. (Adjusted water pressure must be less than 0.1Mpa). Select exchange on the LCD screen. Click run (press +, - to adjust pump pressure). New/used coolant fluid exchanged realized between the engine and the machine.

Compare with the new and used fluid's color through the windows, when the color of new and used fluid is closed in windows that means the exchange finished. Turn off the engine and the machine.



*Recover the original connection after the engine is cooling. Check the antifreeze fluid is enough, if not add to full.

*Start the engine and confirm there's no leakage. Turn off the engine.

*Drain used fluid from small water tank of vehicle and refilling new antifreeze fluid.

*Observe to the temp. of the vehicle during the engine running, stop engine immediately and troubleshooting if high temperature appears.

*Discharge the used fluid in time.

Add coolant

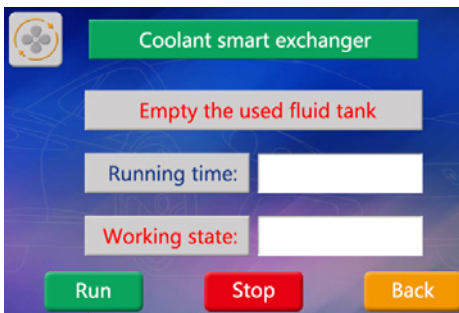


Fill the tank with coolant

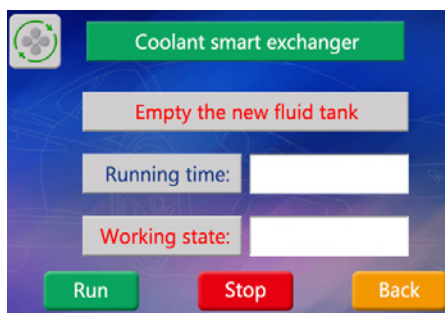


Screw on the cap and test running for one minute, check leakage

Empty the used and new liquid tanks of the machine



Run to empty the used liquid



Run to empty the new liquid

