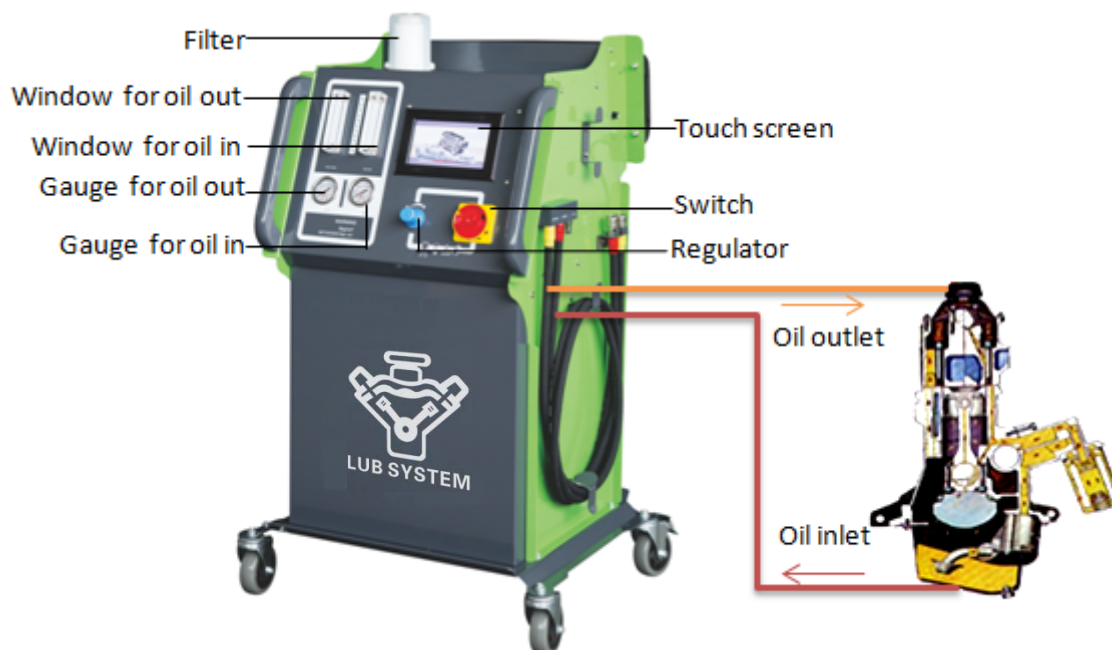


# Engine Flush Machine Operation Step(LCS-9800)

## 1、 Structure



## 2、 Cleaning prepare

Insert the two pipes (oil inlet and oil outlet pipes) into the tank and confirm under the liquid level.



Install a new filter into filter's cover of cleaner and tight up the transparent filter cover after placing "O" style seal;



Turn on the switch of machine and set up the time



## 3. Cleaning operation

(1)Remove the screw below oil pan



Find out the screw



Remove the screw below oil pan

(2) Choose appropriate adaptor from toolbox to screw on the oil pan drain hole



release oil



Choose appropriate adaptor from toolbox to screw on the oil pan drain hole



to screw on the oil pan drain hole

#### 4 Cleaning with engine stop

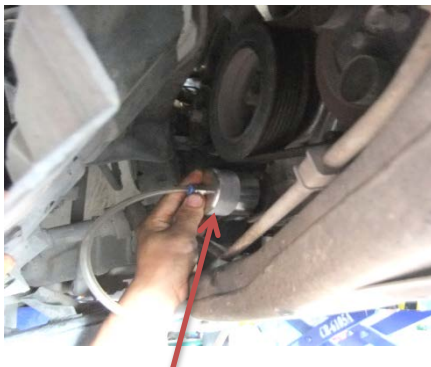
Follow steps below with the filter adaptor



Find out oil filter



Remove the oil filter, Choose the same adaptor as filter “o” style seal(screw) from toolbox to combine together



Tighten the combined adaptor on the oil filter seat

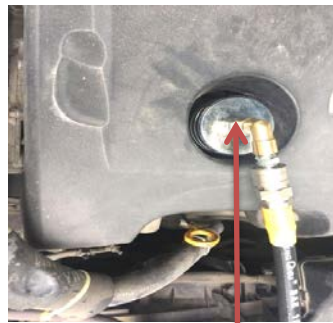
## Hose connection



Follow steps below without the filter adaptor



For unmatched filter adaptor, remove the oil filling cap



Install the special cone tip

Oil pan joint



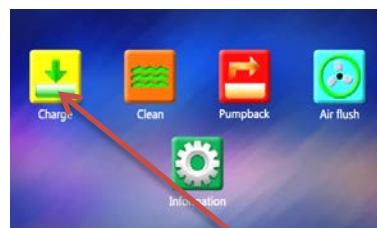
Cone tip for transporting cleaning agent



Connect the hose(oil outlet) with cone tip. Connect the hose(oil inlet) with oil pan joint.  
Operation process



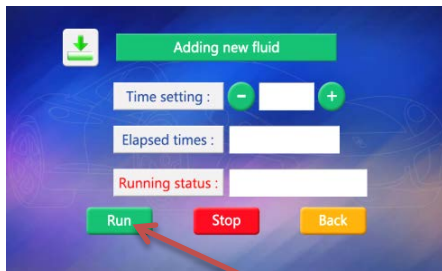
Turn on the switch of machine



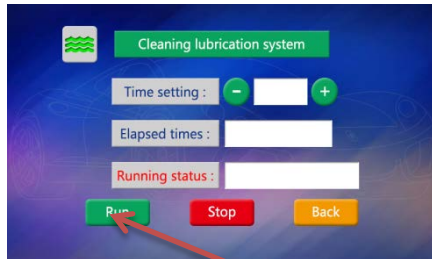
3

Press CHARGE button

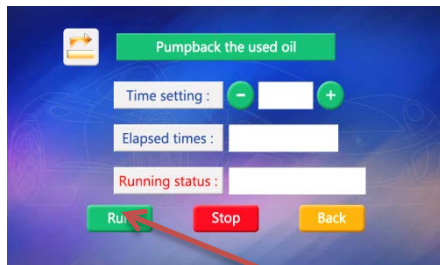




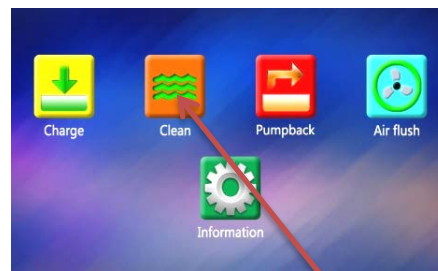
Set up charge time and running



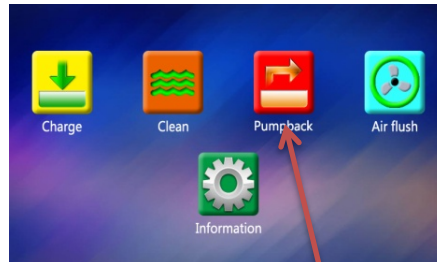
Set up clean time and running



Set up draw back time and running



To clean after charge



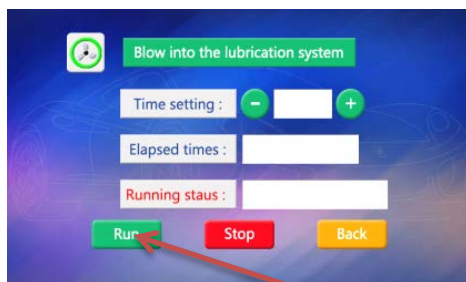
To draw back after cleaning



Stop drawing back when the filter cover is empty

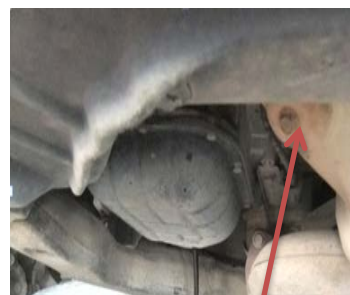
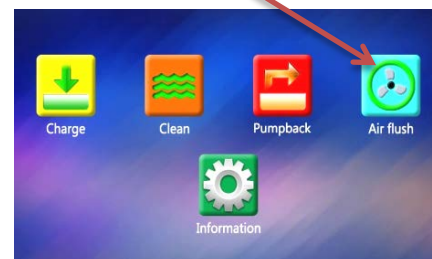
## 5、 Air flushing operation

Remove the oil pan joint after air flushing



Set up air flushing time and running

Click on air flush



While no oil and only at the oil hole of engine oil pan, stop blowing.