

Instruction Manual

Model No.:FY-8038

“Please read this manual carefully before use.”



Introduction





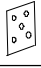

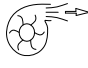
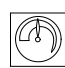
Thank you on choosing our Dust-free Dry Grinding System. Please read this manual carefully to become familiar with the proper operation of the system. Following the instruction, operation and maintenance below will increase the overall efficiency and service life of the system.

The system includes a set of sanders that can be equipped with three sanding pads of different hardnesses--hard, soft and extra-soft. With IC automatic controlled motor of dust cleaner and advanced European technology, the system is a breakthrough product. The air consumption of the sanders is much less than the traditional products. This design not only eliminates the problem of insufficient air supply, but also extends service life of the sanders and increases the safety factor of the whole unit. With compact size of the dust cleaner, high controllability and flexibility, the system is suitable for using in repair garages, auto body shops and collision repair industry.

I 、Features:

1. Powerful motor with strong suction. With blowing mode provides a flexible and reliable cleaning solution.
2. Top cover is fastened by easy off fasteners with quick attachment and release, easy to replace and clean the dust bag and filter.
3. High efficiency quick couplers allow quick connection and disconnection of hose lines.
4. Cascaded and pneumatic. The vacuum cleaner can be linked to work with power tools and pneumatic tools, easy to operate and saving energy.
5. Dedicated powerful dual power vacuum motor allow to collect dust with high-efficient. Vacuum turbine motor with low noise design.
6. Perfect environmental effects and improve painting quality.
7. With unique triple filtration, industrial high density filter, fine dust special drum filter, fine dust filter of air outlet ensure the life of motor. The optional dust bag is available for less cost.
8. Dual independent suckers. Two sanders can be used at the same time.
9. With moveable working platform, flexible and easy to empty dust basket.

II 、Parameter

Voltage/Frequency		220V /50 Hz		Tank capacity	55L	
Volt Count	Vacuum Cleaner	1200W		Power Cord Length	5m	
	Parallel Socket	Max. 2000W		Weight	98 kgs	
Air flow		2.2m ³ /min		Vacuum degree	2400mmH ₂ O	


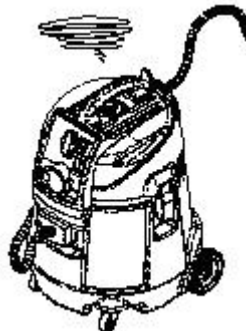
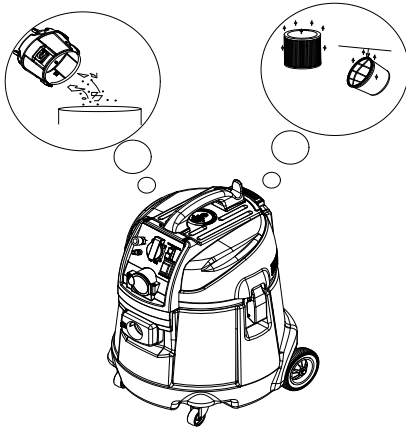
III 、 Parts Name



1	Handle	8	Filter
2	power adjusting switch	9	Fabric Filter
3	Air Valve IN	10	Handle
4	Air Valve Outlet	11	Tank
5	socket	12	Wheel
6	Blow intake	13	Wheel
7	power switch /automatic or manual switch	14	Inpower

IV、 Attention:

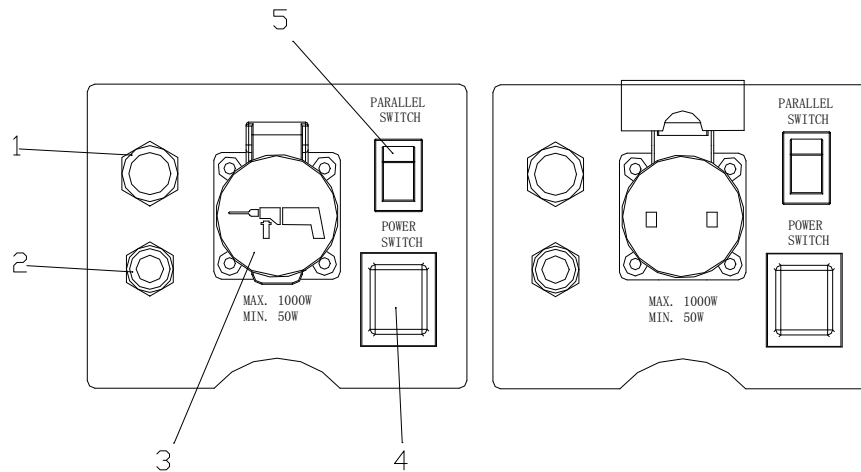
1. Please be sure to read the instruction before use
2. Only be operated by professionals
3. Be sure to use only with the main filter
4. It cannot be used to collect the flammable and explosive dust such as Mg, Al, etc.
5. It cannot be used to collect the flammable liquid such as gasoline and corrosive acid.
6. Only be maintained or repaired by professionals
7. Disconnect power supply before cleaning up, repairing or replacing parts
8. The power cord should be checked regularly to prevent electric leakage

<p>If there is any unusual noises generated from the cleaner, stop the machine and send it to a service center</p>	
<p>If the suction is less than usual, stop to use the machine.</p> <ol style="list-style-type: none">1. Make sure there are no any blocking in the sucker, hose , extension hose and suction inlet.2. Check if the fabric filters are filled with dirty dust. If so, clear it.3. Check if the filter are filled with dirty dust. If so, clear it.	
<p>After use, clean the filter, fabric filter and dust basket.</p>	

9. Do not wash the top of cleaner with water to prevent water leakage.

V、Operation:

1. Make sure the facility supply voltage is the same as shown on the cleaner name plate.
2. Plug in a socket with earthing.
3. Connect the collecting hose to the suction port of cleaner and choose to use a with Vacuumed into the tube mouth according to the need to use a desired sander.
4. Dust cleaner has a control panel as below:



- 1, Air out: for the connection of pneumatic tool
- 2, Air in: for the connection of air compressor
- 3, Socket: Raising the socket lid you can the socket for use, which can be connected to all kinds of electric tools (need to pay attention to the output voltage, which can be connected to power tools 50 ~ 2000W).
- 4、Power switch /automatic /manual switch : dust extraction controls and power plug
- 5、Power adjusting switch :Increase or decrease the motor power to control the vacuum effect and energy saving

Note 1: Automatic mode: When using the power or pneumatic tools, the vacuum cleaner has to be used at the same time. Therefore the dust generated from power or pneumatic tools can be collected by the vacuum cleaner.

- 1) Power Tools plug in the socket and Automatic switch ON, the vacuum cleaner can be started to work with the power tools. The vacuum cleaner will be shut down after switching off the power tools 5-15 seconds.(to make sure all dust has been delivered to the dust basket)
- 2) Connect the air hose of air compressor to the “Air In” and connect the quick coupler of pneumatic tools to ‘Air Out’(The suitable air pressure rate is 2~8KG/CM2. to start the vacuum cleaner).Switch the “Automatic” ON. The vacuum cleaner can be started to work with the power tools. The vacuum cleaner will be shut down after switching off the power tools 5 seconds.
- 3) The default setting of Automatic /Manual switch:

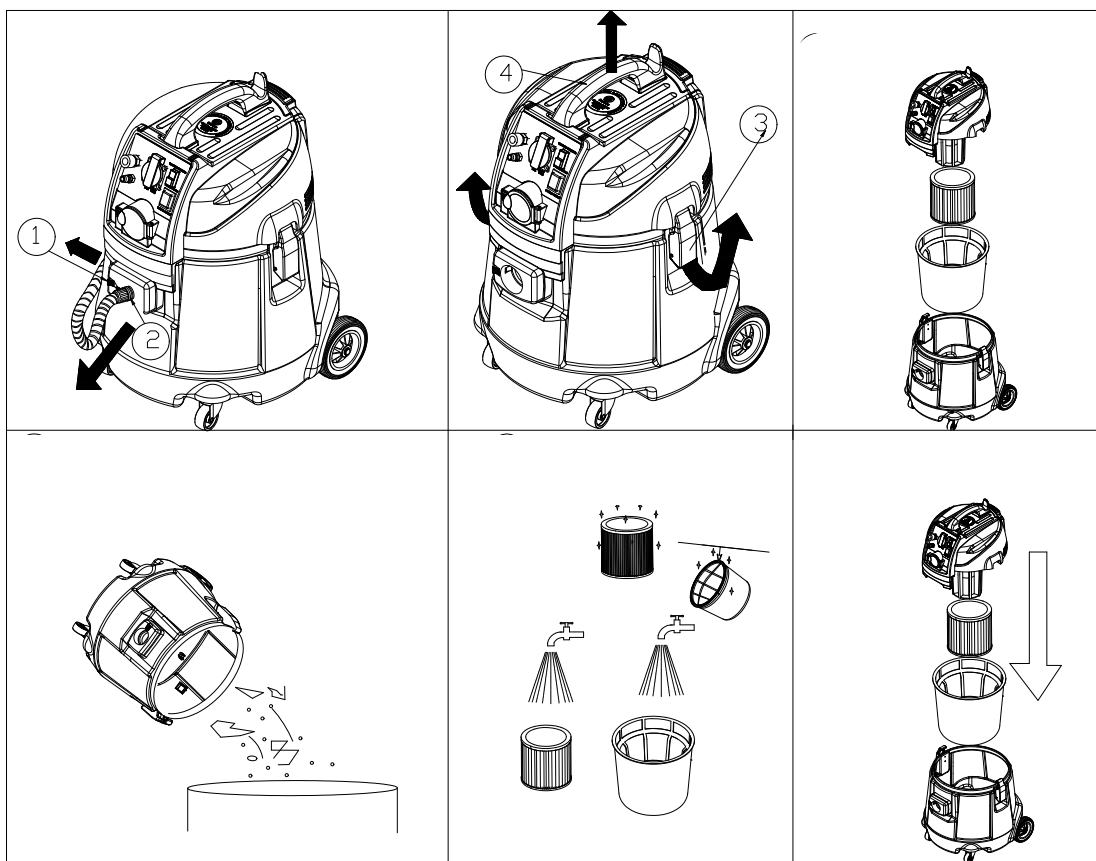
The running power of Manual mode is 50% and Automatic mode is 80%.The setting can be increased or decreased according to the user's needs.

4) Note:

When power tools and pneumatic tools are starting to work at the same time, the controller will determine and accept only the fastest tool signal to start to work. When stopping the tool, the vacuum cleaner only accept the final signal of tools to shut down 5 seconds later after switching off the tools.

VI、Cleaning and Maintenance

1. Wet Type Vacuum Cleaner Cleaning and Maintenance



--Push button to the left

--Pull out the cover following the arrow

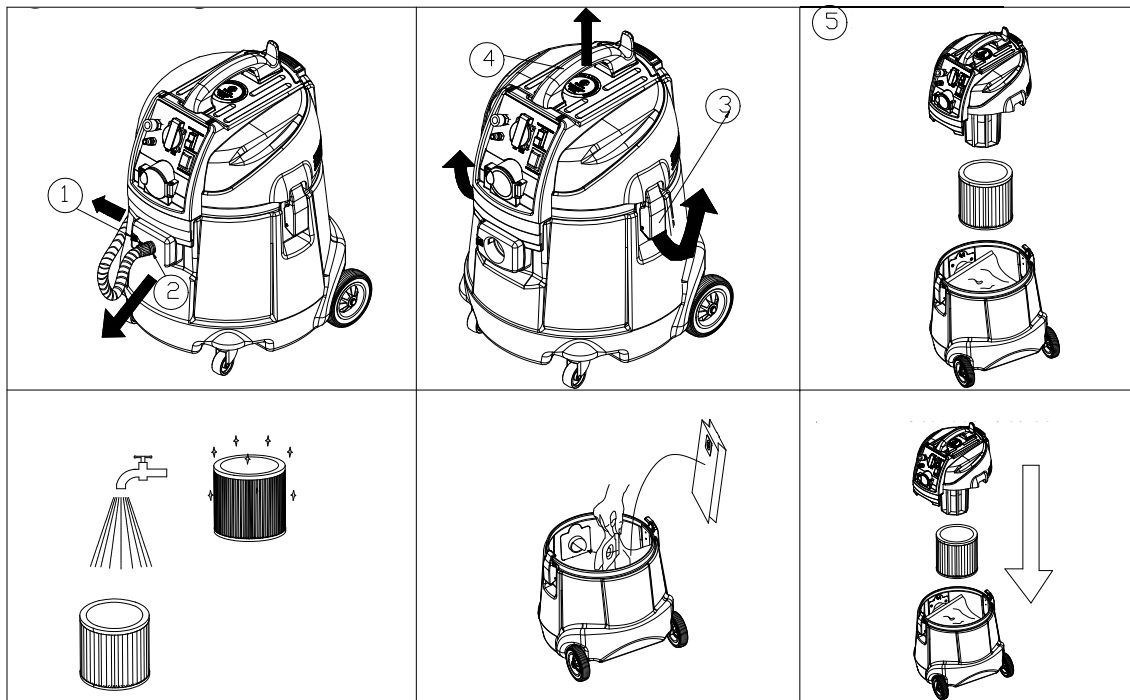
---Take out the fabric filter and filter

--Clean the basket after use

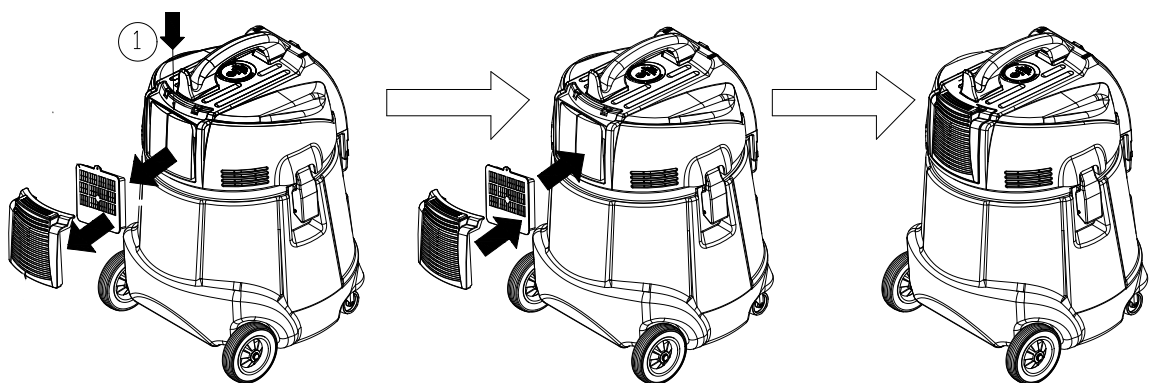
--Clean and dry the fabric filter and filter

---Put all parts back to their original places in order

2. Dry Type Vacuum Cleaner Cleaning and Maintenance



- Push button to the left
 - Pull out the cover following the arrow
 - Take out the filter
 - Clean and dry the filter
 - Put a new bag into air guide hose for use next time
 - Put all parts back to their original places in order.
3. Exhaustion Filter Cleaning and Maintenance



- Press down the cover as shown by the arrow in below Figure.
- Remove the cover and take out the exhaust filter. Clean or replace the filter. This part is not easy to get dirty. Cleaning or replacing frequently of the filter is unnecessary.
-

4, Make sure to drain all water from the air of the air compressor to keep the compressed air

clean. The vacuum clean will not only get rusty and jam the vane, but also damage the air cylinder, vane and bearing causing the cleaner shutting down.

5. After each use, idle the cleaner for 3-5 seconds and blow-drying the dust remaining in the cleaner. Make sure there is no dust and rust water inside the cleaner.
6. It is important to add 2-3 drops of lubricating oil into the Air In and idle the cleaner for 3-5 seconds after each use.